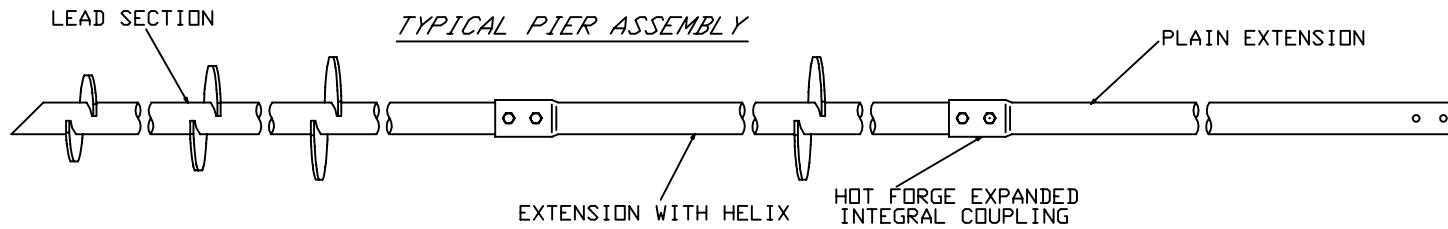


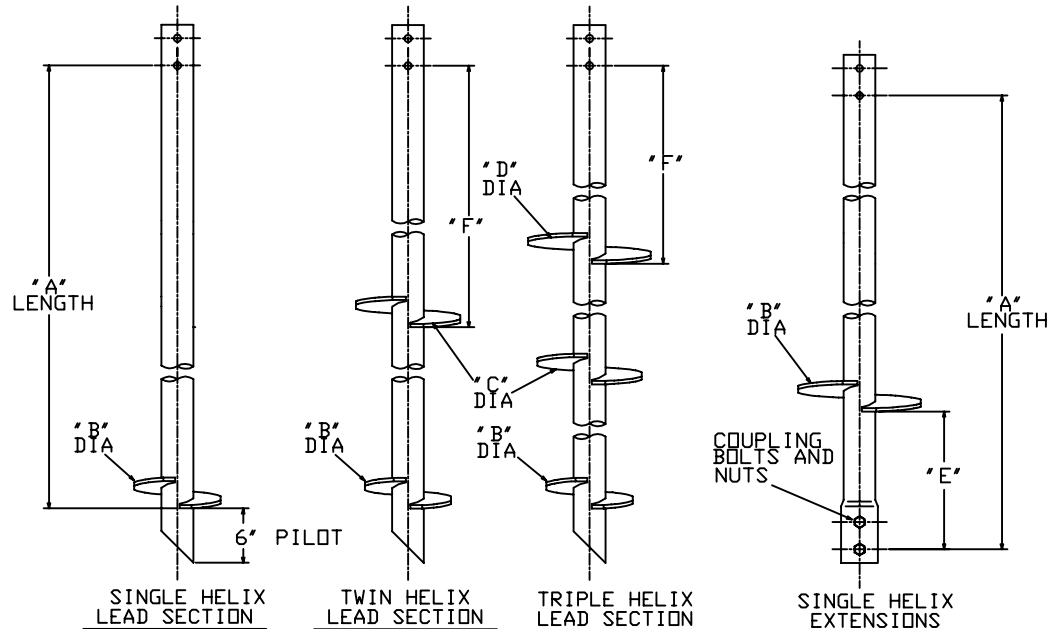
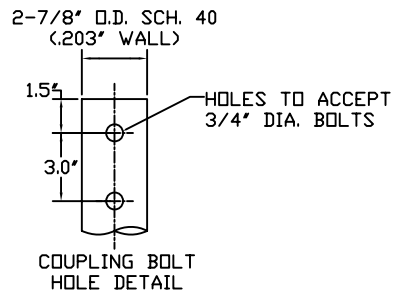
RS2875.203 MULTI-HELIX LEADS

TORQUE STRENGTH RATING-5,500 FT-LB
 ULTIMATE COMPRESSION STRENGTH-60 KIP



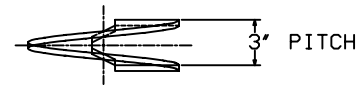
LEAD SECTIONS					
CAT. NO.	"A"	"B"	"C"	"D"	"F"
C278 4510X37	74'	10'	12'	14'	8"
C278 4510X17	74'	14'			
C278 4510X25	49'	10'	12'		19'
C278 4510X35	49'	8'	10'	12'	4"
C278 4510X310	109'	10'	12'	14'	43'
C278 4510X27	74'	10'	12'		44"

HELICAL EXTENSIONS			
CAT. NO.	"A"	"B"	"E"
C278 4714	78'	14'	37'
C278 4514	54'	14'	37'



-NOTES-

1. HOT DIP GALVANIZED PER ASTM 153-(LATEST REVISION)
2. LEAD AND EXTENSION SECTION LENGTHS AND HELIX SPACINGS ARE NOMINAL,
3. NOMINAL SPACING BETWEEN HELIX PLATES IS THREE TIMES THE DIAMETER OF THE LOWER HELIX.
4. HELIX MATERIAL LOW CARBON STEEL MEETING THE GENERAL REQUIREMENTS OF AISI, OR ASTM A572, A656, OR A1018; 3/8" THICK.
5. PIPE SHAFT MATERIAL 2.5" NOMINAL, SCHEDULE 40 WALL THICKNESS PER ASTM A500 GRADE B.
6. MANUFACTURER TO HAVE IN EFFECT INDUSTRY RECOGNIZED WRITTEN QUALITY CONTROL FOR ALL MATERIALS AND MANUFACTURING PROCESSES.
7. ALL WELDING TO BE DONE BY WELDERS CERTIFIED UNDER SECTION 5 OF THE AWS CODE D1.1.
8. FOR PLAIN EXTENSIONS REFER TO DRAWING SA278-4500.



HELIX MUST BE FORMED BY MATCHING METAL DIE
(SIDE VIEW)

CHANCE HELICAL	HUBBELL POWER SYSTEMS		
CONFIDENTIAL: THIS DRAWING AND ITS CONTENTS ARE CONFIDENTIAL AND THE EXCLUSIVE PROPERTY OF HUBBELL POWER SYSTEMS. NO PUBLICATION, DISTRIBUTION OR COPIES MAY BE MADE WITHOUT THE WRITTEN CONSENT OF HUBBELL POWER SYSTEMS. HUBBELL POWER SYSTEMS UNPUBLISHED. ALL RIGHTS RESERVED UNDER THE COPYRIGHT LAWS.	TITLE RS2875.203 MULTI-HELIX LEADS AND HELICAL EXTENSIONS		
SIZE SC/SA2784510X37	DWG NO. SC/SA2784510X37	CAT / PART / ASSY NO. SEE CHART	REV -
DO NOT SCALE THIS DRAWING	DRN BY KSH	DATE 9/6/05	SHEET 1/1